

Procrustomachia

Occasional Papers of the Uncensored Scientists Group

10, 1: 1-11

Milanówek

15 V 2025

ISSN 2543-7747

Review of the [*Cyphogastra* DEYR.]-supergenus (Coleoptera: Buprestidae). New species and supplementary notes.

Roman B. HOLYŃSKI

PL-05822 Milanówek, ul. Graniczna 35, skr. poczt. 65, POLAND

e-mail: rbholynski@gmail.com

Introduction

The material received from time to time for elaboration from some Colleagues illustrates very well the bizarre situation of the XXI c. student of biodiversity: virtually all samples contain specimens providing information apparently highly interesting from both taxonomic and biogeographic points of view, but at the same time their interpretation becomes less and less reliable because of great frequency of inexact (“Moluccas”, “New Guinea” &c.) and/or more or less evidently false [e.g. *C. fruhstorferi* NFR. allegedly from “Java” (HOLYŃSKI 2024); *C. impressipennis* KERR. from “Peleng I.”, *C. i. borneensis* KERR. from “Jayapura” (see below)] labelling... This, already disastrous but further increasingly worsening situation is evidently a result of the majority of newly available specimens having – due to the senselessly proliferated restrictions – not been collected by entomologists themselves but mainly bought from commercial “dealers” for whom the scientific exactitude is apparently not the primary concern... Unfortunately, the material elaborated herein is also heavily branded by the plague of deficient labelling, so the results must be treated *cum grano salis*.

Label quotations:

Simple italics represent printed italics, ***bold italics*** – handwriting.

|| = sign separating data in different rows on the quoted labels

Collection acronyms:

RBH = Roman B. HOLYŃSKI, Milanówek, POLAND

VD = Vincent DUCHATEAU, Hautmont, FRANCE

[for other followed conventions, explanations of terms, abbreviations &c. please – if needed – consult earlier parts of the Review].

Systematic review

BUPRESTIDAE LEACH
BUPRESTINAE LEACH
BUPRESTINI LEACH
CHRYSOCHROINA CAST.
***Cyphogastra* DEYR.**

***Cyphogastra* DEYR. s. str.**
Cyphogastra DEYROLLE 1864: 36-37
[type-species: *Buprestis foveicollis* BOISDUVAL 1835]

***Cyphogastra (s.str.) wallacei* DEYR.**
Cyphogastra wallacei DEYROLLE 1864: 41

New material examined:

Sula Is.: Mandioli I., VII 1997 [1 ♀ (VD)]

Remarks: 28.5×9 mm. Uniformly dull green.

I have not found “Mandioli” on any map or gazetteer but probably it refers to Mangole I. in Sula Archipelago E of Celebes.

***Cyphogastra (s.str.) mincik* HOL.**
Cyphogastra mincik HOLYŃSKI 2016: 56-58

New material examined:

Louisiades: Rossel I., X 1991 [1 ♀ (VD)]

Remarks: 30.5×9.5 mm. No significant difference from the type series.

***Cyphogastra (s.str.) satrapa* (SCHH.)**
Buprestis satrapa SCHÖNHERR 1819: 231

New material examined:

Moluccas: Amboine, VIII 2008 [1 ♀ *f.typ.* (VD)]

Bisa I., 0-150m., III 2008 [1 ♀ *m.intrusa* DEYR. (VD)]

Remarks: Respectively 23.5×7.5 and 25×8mm.; nothing special in morphology. Bisa I. is a small islet N of Obi I.

***Cyphogastra (s.str.) collarti* DESC.**
Cyphogastra collarti DESCARPENTRIES 1956: 229

New material examined:

Lesser Sunda Is.: Timor I., IV 1998 [1 ♀ (VD)]

Remarks: Somewhat smaller (27.5×9.5 mm.) than my female BPgqt, golden-cupreous lustre on elytra indistinct, pronotal fossae broader and more regular (sides almost straightly convergent), sides of abdomen (except for rather narrow median stripe) uniformly dfp, no apical incision on anal sternite; otherwise no appreciable differences.

***Cyphogastra (s.str.) alicunde* sp.n.**

Material examined:

Holotype: „Karel island || INDONESIA || V-97” [♀ (VD)]

Additional material: none

Holotype [Fig. 1]: Female 22×7 mm. Head and pronotum rather mat piceous-black; pronotum greenish-bronzed; elytra dull blackish-green with golden and bluish reflexions, dark blue perisutular interval and inconspicuous green lateral patch; epipleura green; elevated parts of ventral side green, dfp areas cupreous; tarsi and basal two joints of antennae black, 3.

antennomere entirely, 4. and 5. partly testaceous, 6.-11. mat brown. Dfp areas covered with dense, recumbent pale yellowish pubescence and ochraceous pulverulence; median sulcus of prosternal process filled with very dense erect whitish pubescence, that of metasternum somewhat less so; body otherwise glabrous.

Epistome broadly trapezoidally emarginate, no distinct epistomal ridge; supraepistomal carina biarcuate. Front almost twice wider than long, parallelsided; frontal depression deep, elongately triangular, reaching distinctly behind upper margins of eyes; median groove deep, sharply defined, rather coarsely irregularly punctured; eyes strongly convex, definitely protruding outwards; $V:H \approx 0.57$. 1. antennal joint club-shaped, *ca.* $3.5 \times$ longer than thick; 2. globular, as thick as long, *ca.* $4 \times$ shorter and by half thinner than 1.; 3. slightly flattened, elongately triangular, as long as 1. and (at distal end) as wide as 2.; 4. still shorter but apically as wide as 1., $1.5 \times$ longer than wide; 5.– 10. progressively shorter, narrower and more rhomboidal; 11. definitely longer than 10., narrowly asymmetrically subovate.

Pronotum transverse ($BW:AW:L \approx 1.25:0.9:1$, sides straight, slightly but definitely convergent; basal angles acute, anterolateral well marked but not protruding; collar poorly defined; base deeply bisinuate, very broad prescutellar lobe subtruncated, bordered posteriorly with deep linear dfp furrow; anterior margin indistinctly sinuate on both sides of subtruncated, somewhat protruding anterad, median lobe. Median depression very narrowly dfp at bottom; laterobasal fossae irregularly c-shaped, coarsely punctured, non-dfp; anteromedian fovea small, anterolateral barely distinguishable; prehumeral relief poorly demarcated, rhomboidal, coarsely but sparsely punctured; puncturation of elevated parts of disk fine and sparse. Scutellum trapezoidal, as long as wide.

Elytra without subhumeral protrusion, subparallel in basal half, then sinuately convergent to definitely caudate, jointly rounded apices; apical margin with 3 – 4 sharp prominent denticles. Elytral puncturation irregular, very coarse and dense on basal fourth, finer and sparser apically; no trace of dfp depressions or sulci.

Proepisterna entirely dfp; median sulcus of prosternal process broad, coarsely densely granulate; lateral rims impunctate; metasternum deeply sulcate along midline, disk finely and sparsely punctured, sides almost entirely dfp. Abdominal plaque very low but distinctly angular in profile, finely and very sparsely punctulate; lateral and middiscal abdominal dfp bands broad, but narrowly separated, puncturation of median parts of sternites moderately coarse, sparse; apex of anal sternite subtruncatedly rounded.

Geographical distribution: Holotype labelled as “Karel island” – no map or gazetteer known to me mentions such island; I have only found Karel Satsuitubun Airport in Tual (Kai Island) but wonder if it can be in any way relevant here.

Remarks: *C. alicunde sp.n.* is deceptively similar to *C. cribrata* THY. from Matabello (Watu Bela) island group SE of Ceram (*cf.* HOLYŃSKI 2020b) and *C. kubaryi* HOL. from Wangiwangi I. SE of Celebes (HOLYŃSKI 2023a), but differs from both in colouration (black head and pronotum, golden-green epipleura, yellow 3. and 4. antennomeres), relatively narrower pronotum with distinctly convergent sides, less extensively (practically only on the very apical margin) denticulate elytral apices, &c. – these slight differences might, perhaps, be considered individual (varietal), but uncertainties as to the extent of variability [*C. cribrata* THY. known from but 4 ex., *C. kubaryi* HOL. and *C. alicunde sp.n.* only from not directly comparable (respectively ♂ and ♀) holotypes] and distribution (mysterious “Karel island”) does not allow to assign the specimen to any of the known species, supporting the warranty for introduction of a new name.



Fig. 1

Cyphogastra alicunde sp.n.
HT ♀ [VD], Karel I.

Fig. 2

Cyphogastra rudior sp.n.
HT ♀ [VD], Mandiolo I.

Fig. 3

Cyphogastra aerata sp.n.
HT ♀ [VD], Mandiolo I.

***Cyphogastra (s.str.) rudior* sp.n.**

Material examined:

Holotype: “Mandioli island” [♀ (VD)]

Additional material: none

Holotype [Fig. 2]: Female 28×9 mm. Head and pronotum blackish-brown; elytra dull blackish-green with golden bottoms of punctures, dark blue perisutular interval, black apices and moderately conspicuous cupreous lateral patch; epipleura green; elevated parts of ventral side green with strong purplish-bronzed reflexions, dfp areas cupreous; tarsi and antennae dark brown. Median sulcus of prosternal process with moderately long, rather sparse, semierect (inclined anterad) pilosity, dfp areas very densely covered with short whitish recumbent pubescence, otherwise body nearly glabrous.

Epistome deeply trapezoidly emarginate, epistomal ridge fine but distinct; supraepistomal carina sharp, impunctate, medially angularly produced. Front definitely wider than long, parallelsided; frontal depression broadly triangular, rather poorly delimited, reaching distinctly beyond upper margins of eyes, very finely, shallowly and sparsely punctured; anterior cavity broadly paraboloidal, coarsely irregularly punctured; median furrow deep, regular; eyes slightly protruding; V:H≈0.57.

Pronotum transverse, sides slightly but distinctly converging to narrowly rounded anterolateral angles; collar distinct; base bisinuate, prescutellar lobe subtruncate; anterior margin sinuate on both sides of rather prominent, subsinuately truncated median lobe. Disk finely and very sparsely punctulate; fossae deep, c-shaped, not dfp, coarsely but rather sparsely punctured; prehumeral reliefs elongately quadrangular; anteromedian foveola distinct, anterolateral not discernible. Scutellum small, elongately trapezoidal, deeply depressed at middle.

Elytra without subhumeral protrusion, subparallel in anterior $\frac{2}{5}$, then sinuately convergent to definitely caudate apices; lateroapical margin sharply denticulate. Punctuation rather coarse and moderately dense at base, progressively finer backwards; no trace of dfp sulci.

Proepisterna, sides of metasternum and metacoxae, and widely separated abdominal stripes regularly dfp, sternum and abdomen along midline very finely and sparsely, rest of ventral side somewhat coarser and denser punctured; abdominal plaque low, in profile roundedly subobtusely-angled; apex of anal sternite rounded.

Variability: Only the holotype known.

Geographical distribution: Mandioli I. [?=Mangole I. in Sula Archipelago E of Celebes].

Remarks: Superficially looking like a large representative of the *C. cribrata* THY. group, but differs from *C. alicunde* sp.n. e.g. in uniformly brown antennae and apical denticulation extending anterad along the lateral margin of elytra, while from all its relatives in brownish black pronotum.

Cyphogastra (s.str.) aerata sp.n.

Material examined:

Holotype: "Ile de Mandioli || INDONESIE || VI-97" [♀ (VD)]

Additional material: none

Holotype [Fig. 3]: Female 29×9 mm. Both dorsal and ventral side lustrous bronzed, reddish lateroapical elytral patch rather small, suture purplish-blue, apices black, epipleura contrastingly carmine-red; dfp areas golden; tarsi and antennae blackish. Median sulcus of prosternal process with rather short whitish semierect (inclined anterad) pilosity, dfp areas very densely covered with short white recumbent pubescence, otherwise body glabrous.

Epistome deeply trapezoidally emarginate, no distinct epistomal ridge; supraepistomal carina low, rather inconspicuous, impunctate, medially angularly produced. Front *ca.* as wide as long, sides decidedly divergent; frontal depression moderately deep, broadly triangular, reaching distinctly beyond upper margins of eyes, very finely, shallowly and sparsely punctured; anterior cavity sharply delimited, equilaterally triangular, rather regular sparse punctuation moderately coarse; median furrow coarse and deep; eyes not protruding; V:H≈0.5.

Pronotum transverse, sides subparallel to not protruding rounded anterolateral angles; collar relatively distinct; base bisinuate, prescutellar lobe arcuate; anterior margin shallowly sinuate on both sides of rather prominent, somewhat sinuately truncated median lobe. Disk very finely and sparsely punctured; fossae deep, c-shaped, not dfp except for two (basal and anterolateral) small foveolae in each; prehumeral reliefs poorly delimited, coarsely but not very densely punctured, of rounded anteromedian angles; anterior foveolae indistinct, non-dfp. Scutellum small, elongately trapezoidal, with deep foveola at middle.

Elytral sides obliquely truncated at humeri, without subhumeral protrusion, subparallel to midlength, and convergent to slightly caudate apices; lateroapical margin sharply denticulate. Punctuation rather coarse and moderately dense at base, progressively finer to almost vanishing apicalwards; no trace of dfp sulci.

Proepisterna, sides of metasternum and metacoxae, and broad abdominal stripes regularly dfp, median parts of ventral side and rounded "mirrors" on sides of sternites finely and sparsely punctured; rather low but in profile roundedly right-angled abdominal plaque

sparsely (denser in apical half) covered with fine, somewhat elongate punctures; apex of anal sternite very (for a female) broadly and deeply subtriangularly emarginated.

Variability: Only female holotype known.

Geographical distribution: Mandioli I. [?=Mangole I. in Sula Archipelago E of Celebes].

Remarks: Almost uniformly bronzed colouration combined with very fine elytral puncturation makes this beautiful new species unmistakable within the *Javanica*- and related circles.

Occurrence (if not artificially “produced” by mislabelling: both type-specimens apparently obtained from dealers) of two (*C. rudior* sp.n. and *C. aerata* sp.n.) phylogenetically rather close species on a single, not particularly large island might seem unusual, but striking superficial differences in colour, robustness of body and coarseness of sculpture may, perhaps, be just the effect (sympatric character displacement?) of co-occurrence.

***Cyphogastra (s.str.) staudingeri* KERR. ssp.n. FRANK**

Cyphogastra (s.str.) sp.n. FRANK: HOLYŃSKI 2023b: 26

New material examined:

Lesser Sunda Is.: Teon I., X 2019 [1 ♂ (VD)]

Remarks: 25×8.5 mm. Unfortunately still [*cf.* HOLYŃSKI 2023b] undescribed, but, according to the information (*in litt.*) from D. FRANK, the “*article with the new Cyphogastra will be publish in Studies & Reports in October 2025*”.

***Cyphogastra (s.str.) transmarina* HOL.**

Cyphogastra transmarina HOLYŃSKI 2020b: 122-123

New material examined:

Toma [?Tomia I.] SE Celebes, XI 2001 [1 ♀ (VD)]

Remarks [Fig. 4]: 27×9.5 mm. Unfortunately the only hitherto known specimen, the holotype, is now not accessible to me for comparison, and at the time of its having been in my disposition I had no possibility to make a photo of it; moreover, the present specimen is somewhat damaged (crushed up) so that its shape and proportions are practically impossible to evaluate – nevertheless all potentially diagnostic features remain verifiable and, almost perfectly agreeing with those mentioned in the original description (the only appreciable difference being dark oily-green rather than black dorsal colouration), allow the reliable identification.

***Cyphogastra (s.str.) plana* HOL.**

Cyphogastra plana HOLYŃSKI 2020b: 122-123

New material examined:

Lesser Sunda Is.: Pantar I., II 2020 [1 ♂ (VD)]

Remarks [Fig. 5]: Smaller and narrower (27×9 mm.) than female holotype, lateral patch on elytra and cupreous lustre on abdomen imperceptible, apex of anal sternite broadly but very shallowly emarginated.

***Cyphogastra (s.str.) pisciformis* DEYR. s.str.**

Cyphogastra pisciformis DEYROLLE 1864: 42

New material examined:

Waigeo I., I 2015 [1 ♀ (VD)]

Remarks: 25.5×8. Nothing important to comment.

Cyphogastra (s.str.) pisciformis DEYR. *geelvinkiana* GST.

Cyphogastra geelvinkiana GESTRO 1877: 353-354

New material examined:

W-NG: Sorong, IX 2002 [1 ♂ (VD)]

Remarks [Fig. 6]: 24.5×8 mm., morphologically quite typical representative of the rather common subspecies.

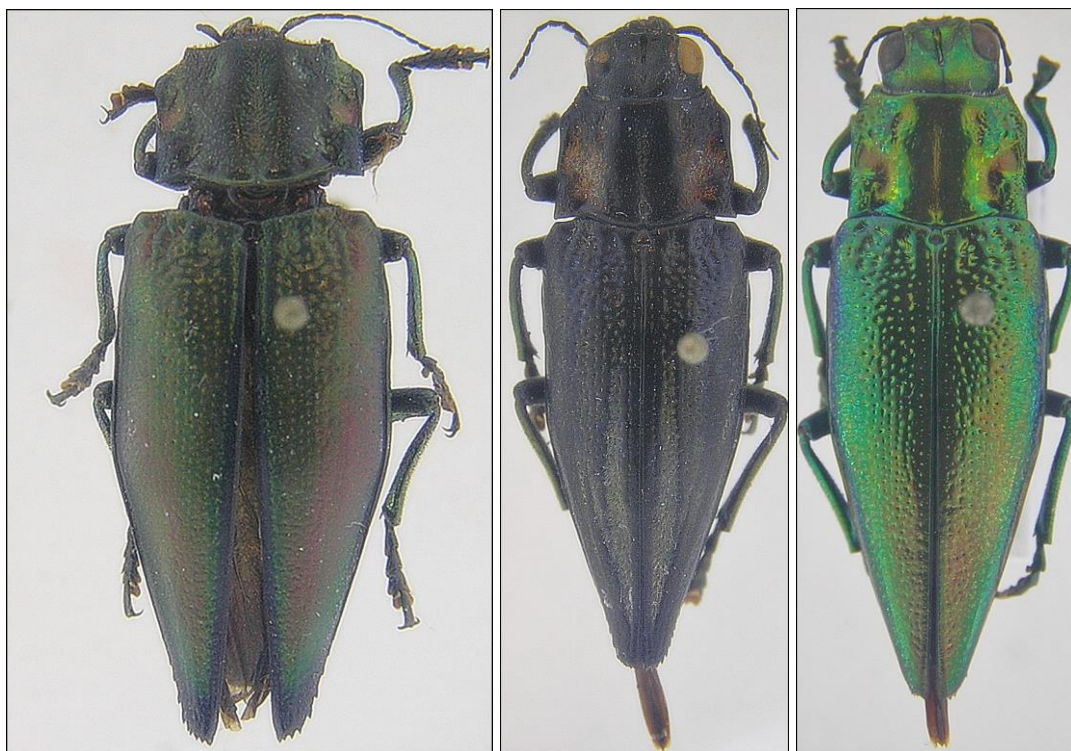


Fig. 4

Cyphogastra transmarina HOL.
♀ [VD], Toma I.

Fig. 5

Cyphogastra plana HOL.
♂ [VD], Pantar I.

Fig. 6

Cyphogastra geelvinkiana GST.
♂ [VD], NG: Sorong

According to the label the specimen originated from “Sorong, PNG”, most probably a mistake: Sorong is well known locality at the northwesternmost tip of the Vogelkop Peninsula (and so of the entire New Guinea), where many beetles preserved in various collections come from – but Vogelkop Pen. does *not* belong to PNG (Papua New Guinea – an independent *state* occupying *eastern* half of the *island* New Guinea! Unfortunately confusing the *political* entity PNG with *geographical* object New Guinea is rather common also among biologists, and almost certainly we have here to do with such situation. However, there exists a small village named Sorong also in PNG, on the Huon peninsula, so this being the true collecting locality of the here discussed specimen, although very unlikely, cannot be fully dismissed – the less so, that *C. nitida* KERR., native to that area but widely separated geographically by the “intercalated”, clearly different, *C. aereiventris* KERR., is morphologically almost identical to *C. geelvinkiana* GST. (the characters distinguishing them are so slight and not reliably diagnostic that in case of sympatric or parapatric distribution I would not hesitate to consider them synonyms: see HOLYŃSKI 2022b for detailed discussion of the case!), what makes even the interpretation of the Sorong specimen as an extreme expression of infra[sub]specific variability very unlikely but not *a priori* ignorable... Nevertheless, the by far most reasonable conclusion seems to be the acceptance of *western* Sorong as the collecting locality of the

discussed specimen, what means the extension of known distribution area of *C. geelvinkiana* GST. over the entire northern coast of the Vogelkop Pen.

***Cyphogastra (s.str.) flavitarsis* GST.**

Cyphogastra flavitarsis GESTRO 1877: 354

New material examined:

Biak I., X 2017 [1 ♀ (VD)]

Remarks: 29.5×10 mm. Fossae very broad (but regularly Γ-shaped), anterior half of perimarginal striola cupreous; otherwise morphology well agreeing with the original description.

***Cyphogastra (s.str.) aereiventris* KERR.**

Cyphogastra aereiventris KERREMANS 1895: 205-206

New material examined:

W-NG: Jayapura Pr.: Klaisu, VIII 2019 [1 ♀ (RBH: BPmde)]

NG: E-Sepik Pr.: Maprik, III 1995 [1 ♀ (VD)]

NG: E-Sepik Pr.: Maprik, 24 VII 1995 [1 ♀ (VD)]

Remarks: 24.5×8, 25.5×8, 29.5×9.5 mm. Ventral side in Klaisu ex. dark green with rather strong golden reflexions, in Maprik specimens dark blue with contrasting reddish-cupreous dfp areas.

***Cyphogastra (s.str.) praeclara* KERR.**

Cyphogastra praeclara KERREMANS 1910: 185-186

New material examined:

N.Ireland: Namatanai, Kait, III 1995 [1 ♀ (VD)]

Remarks: 27.5×9 mm. Elytra rather distinctly caudate.



Fig. 7

Cyphogastra nigerrima sp.n.
HT ♀ [RBH:ftq], PNG: Lufa



Fig. 8

Cyphogastra aterrima KERR.
♀ [VD], PNG: Aseki

Cyphogastra (s.str.) impressa borneensis KERR.

Cyphogastra borneensis KERREMANS 1910: 251

Material examined:

“Jayapura || South Gresik District || INDONESIA” [“PEROU || V 2020”] “400-800 m alt || local collector leg || XII-2022” [“SP. || Loreto Iquitos”] “CYPHOGASTRA || SP.” [♀ (VD)]
[red: texts on reverse of labels]

Remarks: 30×9.5 mm. No significant difference from my specimens collected on Lombok – evidently mislabelled dealer’s material.

Cyphogastra (s.str.) nigerrima sp.n.

Material examined:

Holotype: “PAPUA NEW GUINEA || EH.Province || Luta [sic!] || April 1979” “Cyphogastra || *venerea* THS. || *monticola* HOL. || det. R. Holynski || 1994 [vertically on the left]” “Cyphogastra || *monticola* || HOLYŃSKI || PARATYPE” “Cyphogastra || *aterrima* KERR. || det. R. Holynski || 2021 [vertically on the left]” [♀ (RBH: BPftq)]

Paratypes: “NEW GUINEA || E. HUON || PENINSULA || I-79”

“Cyphogastra || *venerea* Ths. || *monticola* Hol. || det. R. Holynski || 1994 [vertically on the left]” “Cyphogastra || *monticola* || Holyński || PARATYPE” “Cyphogastra || *aterrima* Kerr. || det. R. Holynski || 2021 [vertically on the left]” [1♀ (RBH: BPftr)]

“PAPUA N.G. || Lufa, EHP || 3/1979” “COLLECTION OF || R.L.WESTCOTT” “*Cyphogastra* || *pistor* L.& G. || det. || C.L.Bellamy 1985” “*Cyphogastra* || *venerea* Ths. || *nigrolineata* Hol. || det. R. Holynski 1993” [“1993” – vertically on the left] “*Cyphogastra* || *venerea* Ths. || *monticola* Hol. || det. R. Holynski || 1994 [vertically on the left]” “*Cyphogastra* || *monticola* || Holyński || PARATYPE” “Cyphogastra || *aterrima* Kerr. || det. R. Holynski || 2021 [vertically on the left]” [1♀ (RBH: BPfkf)]

Additional material: 5 ♀

Holotype [Fig. 7]: Female 29.5×9 mm. Dorsally coal black, ventrally greenish-black, dfp depressions golden-green. Body – except dfp areas, pro/metasternal median sulcus and legs – practically glabrous.

Epistome trapezoidally emarginate, epistomal ridge inconspicuous; supraepistomal carina sharply elevated, impunctate, narrowly angularly produced at middle. Front much wider than long, parallelsided; frontal depression elongately angular, almost impunctate; anterior cavity barely individualized; median furrow coarse and deep; eyes not protruding; V:H≈0.54.

Pronotal sides subparallel or but slightly convergent; anterolateral angles well marked but not protruding; collar poorly indicated; fossa very broad, connected to anteromedian foveola, anterolateral poorly developed.

Elytral sides subparallel in basal half, then sinuately tapering to caudate apices; no subhumeral protrusion. Puncturation coarse and irregularly confluent at base, gradually diminishing towards apex but distinct throughout. Perisutural and perimarginal sulci prominently developed, subhumeral lacking.

Proepisterna extensively (except glabrous space at middle of basal half) dfp; prosternal process deeply sulcate and very densely irregularly sculptured along midline; abdominal plaque rather low, apical slope almost vertical, ventral surfaces very sparsely covered with fine punctures; abdomen otherwise coarsely but rather sparsely punctured; marginal and midlateral dfp stripes broad but more or less distinctly separated.

Variability: Females 23.5×7 – 30×9.5 mm.; proepisterna sometimes entirely dfp; apical margin of anal sternite regularly rounded or with small shallow incision at middle. Male unknown.

Geographical distribution: Chimbu and Eastern Highlands Provinces of Papua New Guinea [“*E.Huon Peninsula*” is evidently a misinterpretation of original (from field notes) “EHP” [Eastern Highlands Province].

Remarks: In the course of elaboration of the material recently sent me for identification by Vincent DUCHATEAU I realized that *C. aterrima* KERR., as hitherto (*cf.* HOLYŃSKI 2021) conceived by me consists in fact of two, morphologically distinct and geographically separated, taxa – the differences, though slight, once perceived look rather evident: specimens from Chimbu and E-Highlands Pr. are slenderer, with pronotum and elytra almost strictly parallelsided, ventral side definitely metallic greenish-black and proepisterna entirely dfp, whereas those from Central and [south-easternmost edge of] Morobe Pr. being more robust, with pronotal sides clearly convergent and elytra conspicuously widened to midlength, sternum and abdomen black with but slight bluish or violaceous shine, proepisterna with evident elevated smooth spaces, &c. Which of them should be considered the true *C. aterrima* KERR.? According to BELLAMY (2008) the type should be preserved in Paris (MNHN), but I did not find it during my short visit there in 2007; *terra typica* as given in the original description is too general (“Nouvelle-Guinée”) to be helpful, the characters mentioned – as differentiating from *C. “foveicollis* BOISD.” [= *C. ventricosa* (OL.)] practically worthless... The only somewhat informative remark seems to be “*le corp plus trapu, plus élargi au tiers postérieur*”, what suggests the attribution of the name *C. aterrima* KERR. to the southwestern taxon while the northeastern one must have been described as new.

***Cyphogastra (s.str.) aterrima* KERR.**

Cyphogastra aterrima KERREMANS 1911: 297

New material examined:

NG: Morobe Pr.: Aseki, VIII 1992 [1 ♀ (VD)]

Remarks: 28×9.5 mm. *Cf. Remarks* on *C. nigerrima* sp. n. above!

***Cyphogastra (s.str.) impressipennis* GST.**

Cyphogastra impressipennis GESTRO 1877: 353

New material examined:

Indonesia: Peleng I [1 (VD)]

N.Guinea: Biak I., VIII 2010 [1 (RBH: BPmde)]

N.Guinea: Biak I., 2021 [1 (VD)]

N.Guinea: Yapen I., V 1997 [1 (VD)]

N.Guinea: ad Jayapura: Klaisu, VII 2019 [1 (VD)]

N.Guinea: ad Jayapura: Klaisu, II 2020 [1 (RBH: BPmdf)]

Remarks: Male 23×7.5, females 23.5×7.5 – 32×10.5.

“Peleng island” is evidently a mislabelling; the specimens from Klaisu seem most probably to represent geographically anomalous variant within the range of variability of the taxonomically unstabilized superspecies *in statu nascendi* [“*C. impressipennis* GESTRO is almost certainly not a valid species, being rather a kind of “waste-basket” containing wide variety of specimens showing mixed or intermediate characters of *C. ventricosa* (OL.) and *C. sulcipennis* GESTRO” – *cf.* HOLYŃSKI 2022a].

***Cyphogastra (s.str.) esignata* HOL.**

Cyphogastra esignata HOLYŃSKI 2022a: 18-19

New material examined:

NG: Panjang I. off Fakfak, VI 2016 [1 ♂ (VD)]

Remarks: 24.5×7.5 mm. Dorsally blackish-green, ventral side rather dark green, dfp depressions and bottoms of most elytral punctures cupreous; dfp sulci weak but distinct.

Cyphogastra (s.str.) ventricosa (OL.)
Buprestis ventricosa OLIVIER 1790: plate 6, Fig. 63

New material examined:

NG: Irian, 3 IV 2019 [1 ♀ (VD)]

NG: Arfak Mts.: *ad* Nenei, 200-400 m., XII 2021 [3 ♀ (VD), 1 ♀ (RBH: BPmdd)]

Remarks: 26×8.5 – 31.5×10.

Acknowledgements:

I am greatly indebted to Vincent DUCHATEAU for having kindly sent me for elaboration the material the present contribution has been primarily based on.

Literature:

- BELLAMY C.L. 2008. A world catalogue and bibliography of the jewel beetles (Coleoptera: Buprestoidea), Volume 1: Introduction; Fossil Taxa; Schizopodidae; Buprestidae: Julodinae – Chrysochroinae: Poecilnotini. *Pensoft Series Faunistica* **76**: 1-625
- BOISDUVAL J.A. 1835. Voyage de découvertes de l’Astrolabe exécutée par ordre du Roi, pendant les années 1826-1827-1828-1829, sous les commandement de M.J. Dumont d’Urville. Faune entomologique de l’Océan Pacifique avec l’illustration des insectes nouveaux recueillis pendant le voyage. Deuxième partie. Coléoptères et autres ordres. **Paris: Tastu:** 1-716
- DESCARPENTRIES A. 1956. Note sur des Buprestides peu connus ou nouveaux [COL.]. *BSEF* **61**, 6: 228-231
- DEYROLLE H. 1864. Description des Buprestides de la Malaisie recueillis par M. Wallace. *Ann. Soc. Ent. Belg.* **8**: 1-272; 305-312
- GESTRO R. 1877. Aliquot Buprestidarum novarum diagnoses. *Ann. Mus. Civ. St. Nat. Genova* **9**: 351-362
- HOLYŃSKI R.B. 2016. Four new species of Buprestidae (Coleoptera) from the Louisiade Archipelago. *Procrustomachia* **1**, 4: 54-70
- HOLYŃSKI R.B. 2020b. Review of the [*Cyphogastra* DEYR.]-supergenus (Coleoptera: Buprestidae) IV. The *Gestroi-* and *Javanica-*circles. *Procrustomachia* **5**, 6: 101-130
- HOLYŃSKI R.B. 2021. Review of the [*Cyphogastra* DEYR.]-supergenus (Coleoptera: Buprestidae) V. The *Farinosa-* and *Canaliculata-*circles. *Procrustomachia* **6**, 4: 19-48
- HOLYŃSKI R.B. 2022a. Review of the [*Cyphogastra* DEYR.]-supergenus (Coleoptera: Buprestidae) VI. The *Modesta-*, *Obloquens-*, *Ventricosa-*, and *Pistor-*circles. *Procrustomachia* **7**, 1: 1-38
- HOLYŃSKI R.B. 2022b. Review of the [*Cyphogastra* DEYR.]-supergenus (Coleoptera: Buprestidae) – VII. The *Albertisi-*circle. *Procrustomachia* **7**, 6: 81-128
- HOLYŃSKI R.B. 2023a. Review of the [*Cyphogastra* DEYR.]-supergenus (Coleoptera: Buprestidae) – II-VI. *Addenda & corrigenda*. *Procrustomachia* **8**, 1: 1-11
- HOLYŃSKI R.B. 2023b. Review of the [*Cyphogastra* DEYR.]-supergenus (Coleoptera: Buprestidae). Supplementary descriptions and notes. *Procrustomachia* **8**, 3: 17-34
- HOLYŃSKI R.B. 2024. Review of the [*Cyphogastra* DEYR.]-supergenus (Col: Buprestidae) – Supplementary notes. *Procrustomachia* **9**, 3: 47-52
- KERREMANS C. 1910. Monographie des Buprestides. **Bruxelles: Janssens** **4**, 6-9: 161-288; **5**, 1-8: 1-256
- KERREMANS C. 1911. Remarques synonymiques sur quelques espèces du genre *Cyphogastra* (Col. Bupr.). *ASEB* **55**, 10: 294-297
- KERREMANS C. 1895. Buprestides Indo-Malais. Deuxième partie. *Ann. Soc. Ent. Belg.* **39**, 4: 192-224
- OLIVIER A.G. 1790. Entomologie, ou histoire naturelle des insectes, avec leurs caractères génériques et spécifiques, leur description, leur synonymie, et leur figure enluminée. Coléoptères **2**, genus no 32. Bupreste. *Buprestis.*; **7**. Planches – genres 1 à 65. **Paris: Baudouin:** 1-96, t. 1-12
- SCHÖNHERR C.J. 1817. Synonymia insectorum, oder Versuch einer Synonymie aller bisher bekannten Insecten; nach Fabricii Systema Eleutheratorum etc. geordnet, Erster Band. Eleutherata oder Käfer. Dritter Theil. Hispa – Molorchus. [**Stockholm**]: 1-506

Open access

Edited, published and distributed by:
Informal *Uncensored Scientists Group*
c/o Roman B. HOLYŃSKI

PL-05822 Milanówek, ul. Graniczna 35, skr. poczt. 65, **POLAND**
e-mail: rbholynski@gmail.com