

P. T. G.
C. 12/34

Refer to this map as G.S.G.S. 2758
Sheet URALSK N. M-39
Third Edition

EUROPE 1:1,000,000

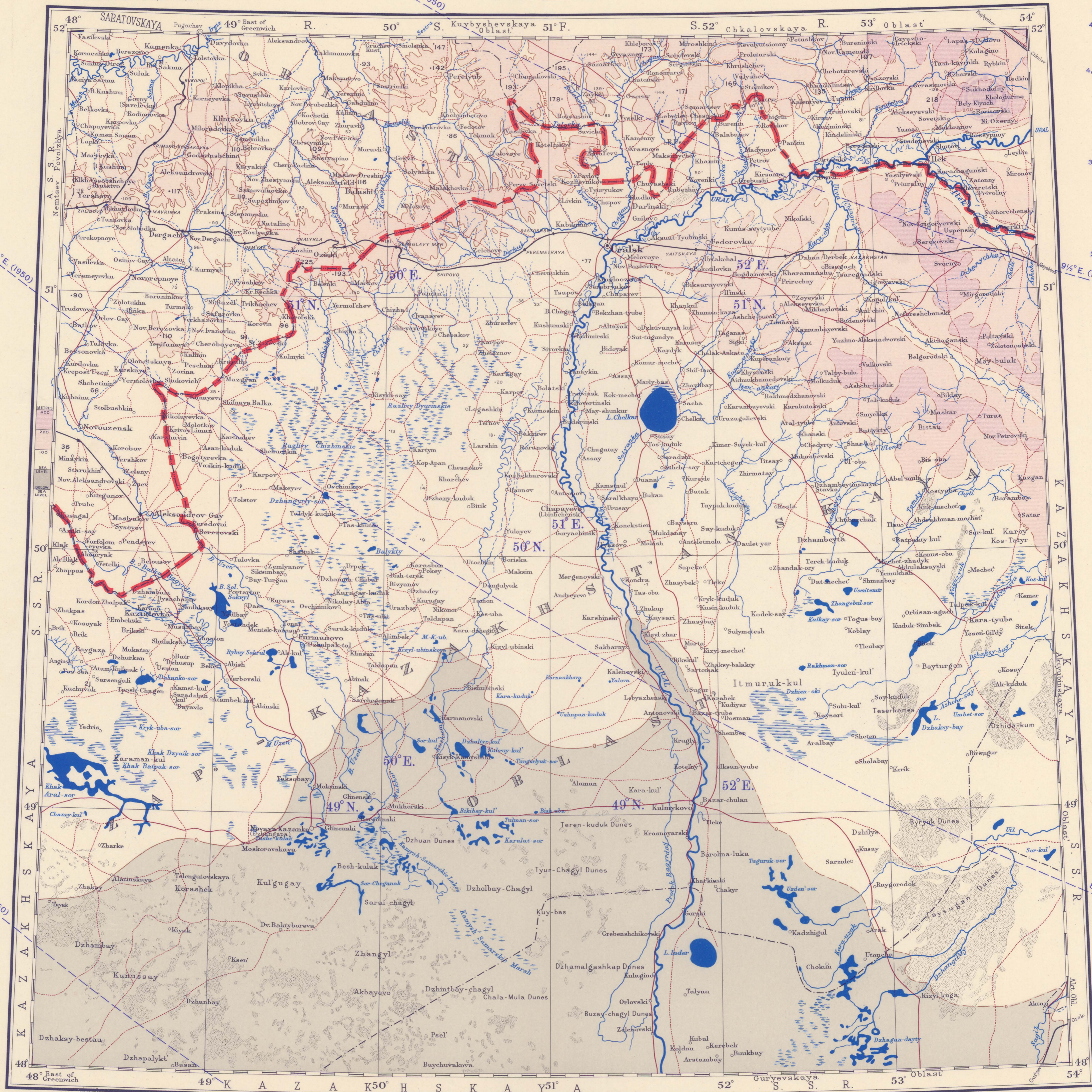
URALSK

THIRD EDITION

N. M-39.

CONVERSION TABLE

Metres	Feet
4,500	15,000
4,000	13,000
3,000	10,000
2,000	7,000
1,000	3,000
0	0



Geographical Section, General Staff, No. 2758
Published by the War Office, 1919.
Third Edition, 1950 (original change only).
3,000/9/50

Compiled and drawn by W.O.
Photographed by the G.S. 1943.

3 hrs. 16 mins.

L.M.T. 3 hrs. 24 mins. ahead of G.M.T.

3 hrs. 32 mins.

Annual change about 1/4 Easterly.

REFERENCE

Railway, multiple track with stations	—	Boundaries, international	—
— single	—	— interstate (united republics)	—
— under construction	—	— autonomous republics and territories	—
Roads, main	—	Towns of 1st importance true to scale	—
— secondary	—	— 2nd	—
Tracks or paths	—	— 3rd	—
Oil pipe line (approximate alignment)	—	— 4th	—
Rivers	—	— 5th	—
— sometimes dry	—	Mountains, Peaks, Capes, islands, etc.	—
Canals	—	Heights in metres	—
Lakes, Salt lakes	—	Trigonometrical or astronomical point	—
Marshes and Swamps	—	Pass	—
— salt	—	Seaport	—
Sand	—	Lighthouse	—
Contours, for vertical interval see table of altitude limits	—	Mine	—
		Well or Spring	—

HEIGHTS IN METRES

METHOD OF GIVING A POSITION REFERENCE ON THIS SHEET.

First give the code letters denoting the exact degree of latitude and longitude immediately to the South and West of the required point. Then give in figures the distance in minutes of latitude and in minutes of longitude of the point from the degree intersection so described. Thus if 50° N. is represented by AB and 23° W. by XY then the position 50° 08' N. 23° 33' W. will be denoted ABXY 0827. Similarly if 50° N. is represented by AB and 5° E. is represented by PQ then the position 50° 17' N. 5° 38' E. is ABPQ 1738.

Scale 1:1,000,000
1 Inch=78 Miles or 1.014 Inches=16 Miles
1 Millimetre=1 Kilometre

ABBREVIATIONS

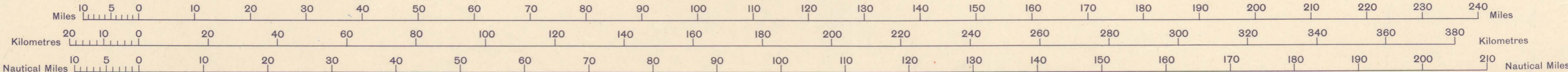
RUSSIAN	ENGLISH	RUSSIAN	ENGLISH
A.S.S.R.	Autonomous Soviet Socialist Republic	R.S.F.S.R.	Russian Soviet Federative Socialist Republic
B.	bol'shoy	Sev.	severnny
K.	kray	St.	stary
M.	malyy	Sokh.	sokhoz
Ni.	nizhniy	V.	verkhniy
Nov.	novyy	Vel.	velikiy
Ob.	oblast	Vost.	vostochnyy
Ok.	okrug	Yu.	yuzhnyy
		Zap.	zapadnyy

INDEX TO ADJOINING SHEETS

PENZA N38	KUYBYSHEV N39	MAGNITOGORSK N40
STALINGRAD M38	CHALOV M40	
ELISTA L38	ASTRAKHAN L39	CHELKAR L40

Projection of the International Map

This map must NOT be considered an authority on the delimitation of international boundaries.



Refer to this map as G.S.G.S. 2758
Sheet URALSK N. M-39
Third Edition

SALES COPY
PRICE 4/-